



## Journal of Advanced Research in Applied Mechanics

Journal homepage:  
[https://semarakilmu.com.my/journals/index.php/appl\\_mech/index](https://semarakilmu.com.my/journals/index.php/appl_mech/index)  
ISSN: 2829-7895



# Sustainable lightweight foamed concrete using hemp fibre for mechanical properties improvement

Md Azree Othuman Mydin<sup>1,\*</sup>, Samadar Salim Majeed<sup>2</sup>, Roshartini Omar<sup>3,4</sup>, Paul Oluwaseun Awoyera<sup>5</sup>, Hadee Mohammed Najm<sup>6</sup>

<sup>1</sup> School of Housing, Building and Planning, Universiti Sains Malaysia, 11800, Penang, Malaysia

<sup>2</sup> Department of Civil Engineering, College of Engineering, Nawroz University, 42001 Duhok, Iraq

<sup>3</sup> Department of Construction Management, Faculty of Technology Management and Business (FPTP), Universiti Tun Hussein Onn Malaysia (UTHM), Parit Raja, Batu Pahat, Johor 86400, Malaysia

<sup>4</sup> Center of Sustainable Infrastructure and Environmental Management (CSIEM), Faculty of Technology Management and Business (FPTP), Universiti Tun Hussein Onn Malaysia (UTHM), Parit Raja, Batu Pahat, Johor 86400, Malaysia

<sup>5</sup> Department of Civil Engineering, Covenant University, Ota, Nigeria

<sup>6</sup> Department of Civil Engineering, Z. H. College of Engineering and Technology, Aligarh Muslim University, Aligarh, India

### ARTICLE INFO

#### Article history:

Received 11 November 2022

Received in revised form 19 January 2023

Accepted 21 January 2023

Available online 31 January 2023

#### Keywords:

foamed concrete; durability properties; natural hemp fibre; water absorption; porosity; carbonation depth; shrinkage

### ABSTRACT

Fibres have long been used as an additive in the fabrication of building elements and materials. A combination of natural and synthetic fibres has shown promise in preliminary research and testing, with the added benefit of greatly improved strengths of the composites. Compared to traditional reinforcement bars, natural fibre reinforcement's ratio of fibre required is significantly lower, making it more beneficial in terms of energy and economic values. Recent research has focused on the feasibility of using both natural and synthetic fibres as reinforcement in concrete and other construction materials. Thus, the purpose of this research is to investigate the feasibility of using hemp fibre at various percentages (0%, 0.2%, 0.4%, 0.6%, and 0.8%) as an additive in lightweight foamed concrete to enhance mechanical properties. Three LFC densities namely 500, 900 and 1300 kg/m<sup>3</sup> were fabricated and tested. Axial compressive strength, flexural strength, splitting tensile strength, and ultrasonic pulse velocity were the four mechanical parameters that were assessed. The findings demonstrated that adding 0.4-0.6% of HF to LFC produced the best results for ultrasonic pulse velocity, compressive strength, flexural strength, and splitting tensile strength. The HF is essential in assisting to stop the spread of cracks in the plastic state of the cement matrix after the load was applied.

## 1. Introduction

Aside from the fact that its production requires a lot of energy and results in releases of carbon dioxide that have a negative impact on the environment [1], cement is arguably the material that is used the most in the process of concreting for construction [2]. Conventional concrete contains a large portion of cement quantities in it [3]. As a result, conventional concrete construction is a major contributor to the pollution of the global environment and air [4]. As a result of these problems,

\* Corresponding author.

E-mail address: [azree@usm.my](mailto:azree@usm.my)

<https://doi.org/10.37934/aram.101.1.1935>

researchers are looking into alternatives to cement as well as the utilization of materials that are better for the environment in concrete construction [5]. Concrete that is environmentally friendly and sustainable is called green concrete, and it is a composite material where cement and aggregate is replaced with waste and natural materials [6]. Since the beginning of the 21st century, scientists have been toiling away 24 hours a day, seven days a week in an effort to perfect a form of sustainable concrete that is superior in terms of its properties, kind to the environment, and capable of bringing down the cost of production [7]. In an effort to develop environmentally friendly concrete, a number of natural fibres like coir, sugarcane bagasse, hemp bamboo, jute, flax and ramie have been continually tested out in an effort to cut back on the consumption of cement and make better use of resources that are readily available as well as to progress the concrete properties [8].

Building materials have traditionally been made with the assistance of fibres for a very long time. The results of preliminary research and testing have shown that the combination of natural and synthetic fibres in a composite material can produce remarkable results. This is due to the fact that the presence of both types of fibres confers significant advantages on the composite material's mechanical properties. Because the ratio of fibre needed for natural fibre reinforcement is significantly lower than that required for traditional reinforcement, natural fibre reinforcement is significantly more beneficial in terms of energy and economic values than conventional reinforcement bars [9]. Recent research has been organized to explore the possibility of using natural and synthetic fibres as reinforcement in construction materials, specifically concrete.

Significant interest from industrial players and manufacturers of construction materials has been focused on lightweight foamed concrete (LFC) as of late [10-13]. This is because LFC has high workability, variation in densities, decent thermal insulation properties, and sound protection, among other desirable mechanical qualities [14]. Furthermore, LFC is an eco-friendly construction material due to its low aggregate needs and a high potential for the incorporation of waste materials like natural fibres [15]. Using a suitable foaming agent, cement paste and homogeneous foam are combined to create LFC, also known as self-compacting material. It's possible to think of this blend as a self-compacting material [16]. Because its volumetric air content is greater than 25%, LFC stands out from other highly air-entrained materials [17]. Despite growing interest in LFC around the world, its implementation in the Malaysian construction industry is just getting started [18]. Conversely, it has been used in a variety of building and earthfilling initiatives [19]. LFC has some disadvantages such as low flexural and tensile strengths, high shrinkage and porous in nature [20]. Therefore, utilizing natural fibres in LFC would assist to improve these drawbacks.

Several studies on the effects of adding natural fibres to cement-based materials have been conducted over the past few decades for instance hemp, kenaf, and bamboo natural fibres. Wahyuni et al. [21] found that the addition of 0.5% bamboo fibres resulted in a similar increase in splitting tensile strength, tensile strength by 24%, rigidity by 55 to 97%, and elasticity by 16% to 60%. Besides, Kumarasami et al. [22] made a similar finding, determining that 2% is the sweet spot for bamboo fibres due to their demonstrably superior properties. On the other hand, Kavitha and Kala [23] observed that the workability of bamboo decreased gradually as the amount of bamboo fibres increased. Archilla et al. [24] determine that bamboo-reinforced concrete is not a suitable replacement for steel reinforcements in concrete. Treatments applied to the surface to improve adhesion are time-consuming, expensive, and often toxic. That means that in addition to steel reinforcements, bamboo fibres can be used to fortify concrete. Li et al. [25] Incorporating 0.5% alkali-treated bamboo fibres into cement concrete increased toughness and decreased elastic modulus, according to a recent study.

Furthermore, kenaf fibres are highly suitable for use as a reinforcement material due to their high mechanical strength and low density. Sodium hydroxide surface treatment allows for the regulation

of hydrophilic properties [26]. In contrast to the brittle failure displayed by control concrete, the kenaf fibre concrete specimens display ductile failure. The concrete with unprocessed kenaf fibres demonstrated superior workability [27]. Elsaid et al. [8] found that the kenaf fibre concrete had lower compressive strength (57.0 N/mm<sup>2</sup>, 6.0 N/mm<sup>2</sup>, and 3.0 N/mm<sup>2</sup>), flexural strength (5.0 N/mm<sup>2</sup>), and split tensile strength (4.0 N/mm<sup>2</sup>) than the control concrete. At the microstructural level, a strong bond between the concrete matrix and kenaf fibres has been seen, and the toughness index of the kenaf fibre concrete is about three times that of the control concrete. According to Kim et al. [29], gamma-ray irradiation significantly boosts the compressive and flexural strength of cementitious composites containing kenaf grafted with acrylamide. According to the study conducted by Mohsin et al. [30], the addition of kenaf fibre increases flexural strength, enhances ductility, and decreases crack propagation. The addition of 0.25–0.50% kenaf fibres have been shown to significantly reduce autogenous and drying shrinkage cracking [31].

Hemp fibre added to concrete causes a 45-minute delay in the setting time [32]. Researchers Poletanovic et al. [33] found that adding hemp fibres at a concentration of 0.5% to 1.0% lowered the concrete density 5%. The modulus of elasticity was decreased by 7% [34], while the flexural strength decreased by 31%, the splitting tensile strength decreased by 1%, the compressive strength decreased by 19%. The ideal fibre ratio, according to Kaplan and Bayraktar [35], is 2% for fibres that are 1 cm long. According to Li et al. [36], adding 20 mm length fibre in 0.36% by weight increased compression strength by 4%, flexural tensile strength by 9%, toughness index by 214%, and flexural toughness by 144%. Ghosn et al. [37] found that recycled aggregate concrete made with alkali and acetyl-treated hemp fibre performed better. While flexural and splitting tensile strengths remained the same, compressive strength and modulus of elasticity decreased.

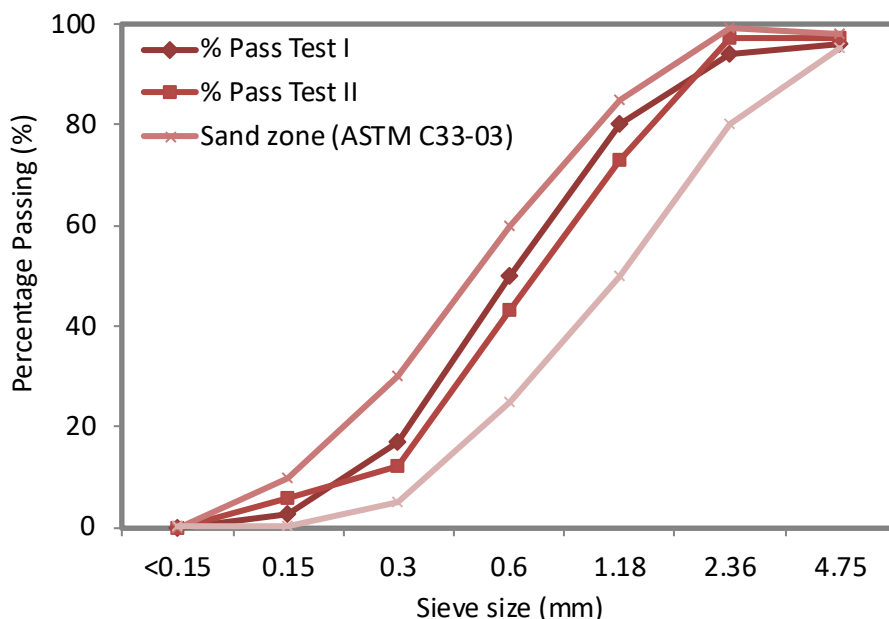
There was a noticeable improvement in toughness, energy dissipation, thermal properties, and resistance to freeze-thaw cycles. Some researchers have found that hemp concrete has a low resistance to freeze-thaw cycles [38]. Although hemp fibres did not significantly slow the spread of cracks, they did not help prevent fires either [39]. Ziane et al. [40] found that mechanical properties are degraded when using hemp fibres at concentrations above 0.25% due to the uneven distribution of the fibres. Absorption and dynamic modulus are both improved. To counteract external sulphate attacks, concrete with 0.25% hemp fibres has been shown to have tensile strength on par with polypropylene fibres. Therefore, considering the literature gap, this paper thoroughly investigates the influence of HF addition into LFC on its mechanical properties such as compressive strength, flexural strength, splitting tensile strength and ultrasonic pulse velocity.

## **2. Methodology**

### *2.1 Materials*

#### *2.1.1 Fine sand*

Fine river sand that met the requirements of BS EN 12620 [41] was used. A finer sand material for LFC production was obtained by first drying the sand in the lab and then sieving it through a 1.18 mm sieve. Fig. 1 displays the findings of a sieve analysis completed on the fine sand to determine its gradation. Based on the sieve analysis outcomes, the sand may qualify as fine sand (size smaller than the 1.18mm sieve).



**Fig. 1.** Sand grading curve with upper and lower limits

### 2.1.2 Cement

Ordinary Portland Cement (OPC) utilized in this investigation was provided by YTL Cement. The cement chemical compositions are listed in Table 2. The cement meets the requirements set forth in BS EN 197-1 [42], which are the international standards for Portland cement.

**Table 1**

OPC chemical composition employed in this study

S/No.	Oxides	Composition (%)
1	Calcium Oxide	65.94
2	Ferric Oxide	2.65
3	Aluminium Oxide	5.83
4	Silicon dioxide	16.83
5	Magnesium Oxide	1.50
6	Potassium Oxide	0.86
7	Sulphur Oxide	2.77
8	Phosphorus Oxide	0.07
9	Loss of Ignition	-

### 2.1.3 Water

The mixture was made using pure, drinkable tap water. As a surfactant, a protein-based foaming agent made in Malaysia was used.

### 2.1.4 Hemp fibre

There were five different HF weight fractions used: 0.0%, 0.2%, 0.4%, 0.6%, and 0.8%. The HF was meticulously washed to eliminate any undesirable debris and impurities before being used as an additive in LFC. The HF used in this research is depicted in Fig. 2. Table 2 displays the chemical

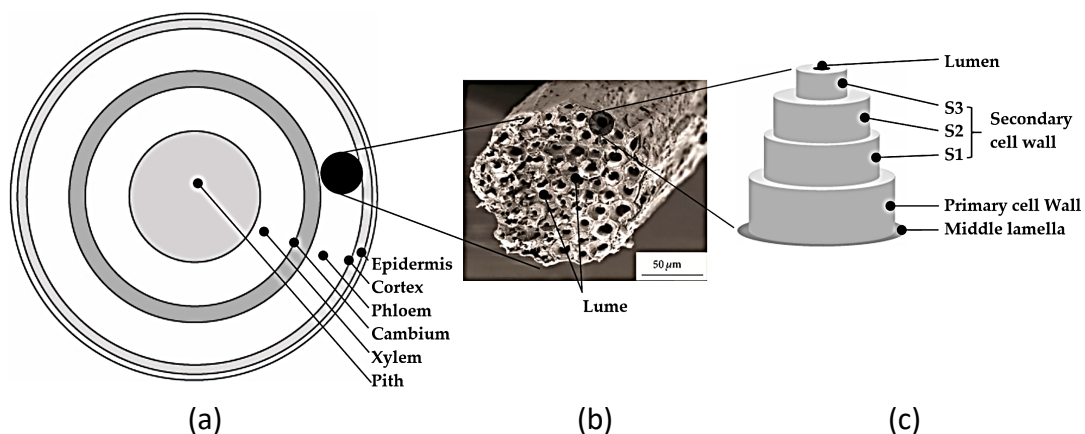
composition and mechanical properties of HF employed in this investigation. Fig. 3 demonstrates the structure of HF [43].



**Fig. 2.** Raw hemp fibre employed in this study

**Table 2**  
 Chemical composition and properties of single hemp fibre

Properties	Values
Cellulose	72.5%
Hemicellulose	20.8%
Lignin	5.8%
Wax	0.9%
Density	1.38 g/m <sup>3</sup>
Diameter	358 μm
Elongation at break	3.8 %
Tensile strength	654 N/mm <sup>2</sup>
Young modulus	85 Pa



**Fig. 3.** HF structure: (a) a section through the middle of the HF stem [44], (b) the morphology of the HF bundle [45], and (c) a simplified representation of the fundamental HF [6]

## 2.2 Mix design

There were three densities of LFC were prepared in this study specifically 500, 900 and 1300 kg/m<sup>3</sup>. The cement-sand ratio was fixed at 1:1.5 while the water-cement ratio was retained at 0.45.

This water-to-cement ratio was found to give desirable workability of LFC for all three densities considered in this study. Table 3 visualized the mix design of LFC with varying weight fractions of HF.

**Table 3**  
 LFC mix design with varying weight fractions of MF

Sample	Density (kg/m <sup>3</sup> )	Hemp fibre (kg/m <sup>3</sup> )	Cement (kg/m <sup>3</sup> )	Sand (kg/m <sup>3</sup> )	Water (kg/m <sup>3</sup> )	Foam (kg/m <sup>3</sup> )
Control-500	500	0.00	194.1	291.2	87.4	46.3
0.1% HF500	500	0.62	194.1	291.2	87.4	46.3
0.2% HF500	500	1.24	194.1	291.2	87.4	46.3
0.3% HF500	500	1.86	194.1	291.2	87.4	46.3
0.4% HF500	500	2.48	194.1	291.2	87.4	46.3
0.5% HF500	500	3.09	194.1	291.2	87.4	46.3
Control-900	900	0.00	338.6	507.9	152.4	33.8
0.1% HF900	900	1.03	338.6	507.9	152.4	33.8
0.2% HF900	900	2.07	338.6	507.9	152.4	33.8
0.3% HF900	900	3.10	338.6	507.9	152.4	33.8
0.4% HF900	900	4.13	338.6	507.9	152.4	33.8
0.5% HF900	900	5.16	338.6	507.9	152.4	33.8
Control-1300	1300	0.00	483.0	724.5	217.4	21.3
0.1% HF1300	1300	1.45	483.0	724.5	217.4	21.3
0.2% HF1300	1300	2.89	483.0	724.5	217.4	21.3
0.3% HF1300	1300	4.34	483.0	724.5	217.4	21.3
0.4% HF1300	1300	5.78	483.0	724.5	217.4	21.3
0.5% HF1300	1300	7.23	483.0	724.5	217.4	21.3

### 2.3 Experimental setup

#### 2.3.1 Compression test

The LFC cube sample with dimensions of 100 x 100 x 100 mm was used to test the compressive strength of the hardened concrete specimen. A general testing device with a 3000KN load capacity, the GOTECH GT-7001 BS 300, was used for the test in the concrete laboratory (Fig. 4). According to BS EN 12390-Part 3 [47], a compressive strength test was performed with a load speed of 0.6 MPa/sec. For every curing period, three samples were tested.



**Fig. 4.** Apparatus for compression testing

### 2.3.2 Splitting tensile test

Test samples that were 100 mm in diameter and 200 mm in height were used for the splitting tensile strength test. The LFC specimens were assessed on a similar testing machine that was utilized to test the compressive strength. Also, the speed was kept at 0.55 MPa/sec. Three LFC specimens were taken and tested at each curing time. The test was done according to the BS EN 12390-Part 6 [48] standard.



**Fig. 5.** Setup for splitting tensile test

### 2.3.3 Flexural test

A 100 x 100 x 500 mm prism (beam) was used to test the flexural strength. The size of this beam was chosen because low-density LFC has a very low strength. As with compressive strength, three LFC specimens were assessed, and the average of the three results was recorded as flexural strength. The test was done at a rate of 0.35 KN/sec on an ELE flexural testing machine. In line with BS EN 12390-Part 5 [49], a three-point bending test was done. Figure 6 shows the setup of the three-point flexural test.



**Fig. 6.** Setup for three-point flexural test via ELE flexural testing machine

### 2.3.4 Ultrasonic pulse velocity test (UPV)

The UPV is a useful parameter for determining concrete properties using a non-destructive method. This test procedure entails sending wave pulses across LFC of a specific length dimension and in line with ASTM C 597-16 [50] standard. There are two transducers involved. At one surface of the test samples, one transducer transmits an electro-acoustical pulse in a longitudinal direction. The vibrating pulse is converted into an electrical signal by the second transducers on the opposite face, and the transit time  $T$  (s) of the pulse is measured by an electronic timing circuit, from which the velocity of the pulse  $V$  (m/s) is calculated with respect to the distance between the two transducers. The pulse velocity  $V$  is proportional to the elastic modulus and density of the concrete material. The test method is appropriate for determining the uniformity and relative quality of concrete. It also indicates the presence of air voids and cracks. It is used in the field as a non-destructive method of determining the severity of deterioration or cracking in a concrete structure.

## 3. Results

The findings from the laboratory investigation of LFC reinforced with various HF weight fractions are presented in this section. Axial compression test, flexural test, splitting tensile strength, and ultrasonic pulse velocity tests were used to evaluate the properties.

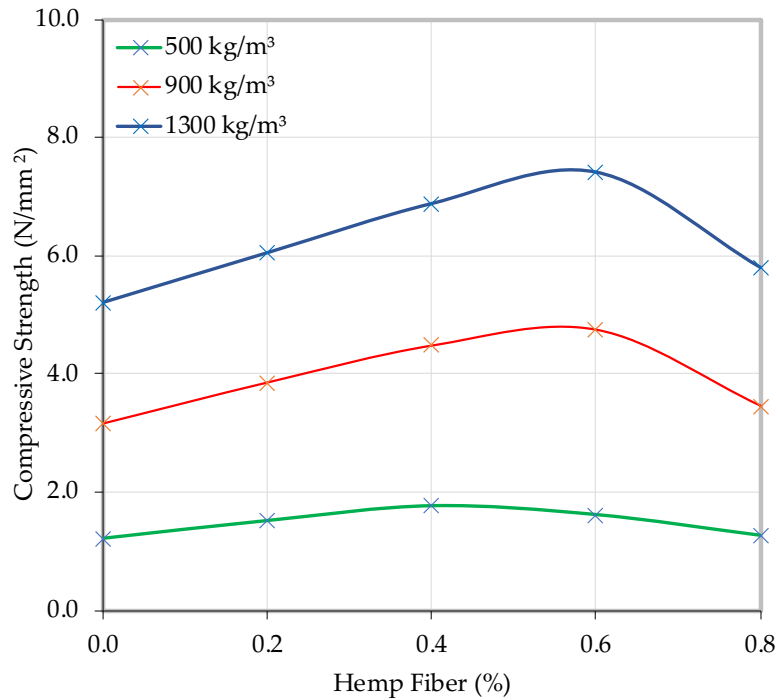
### 3.1 Compressive strength

The axial compression strength values for FC densities of 500, 900, and 1300 kg/m<sup>3</sup> with various volume fractions of HF are depicted in Fig. 7 while Fig. 8 demonstrates the normalized compressive strength of these three densities. These normalized values (%) can be used to compare the rate of decrease in compressive strength at different weight fractions of HF. According to Fig. 7 and Fig. 8, LFC with a density of 500 kg/m<sup>3</sup> and 0.4% HF had a superior axial compressive strength of 1.76 N/mm<sup>2</sup> compared to other weight fractions. Besides, LFC with densities of 900 kg/m<sup>3</sup> and 1300 kg/m<sup>3</sup> and 0.6% HF produces ideal axial compressive strength compared to other HF weight fractions at 4.75 N/mm<sup>2</sup> and 7.45 N/mm<sup>2</sup> respectively.

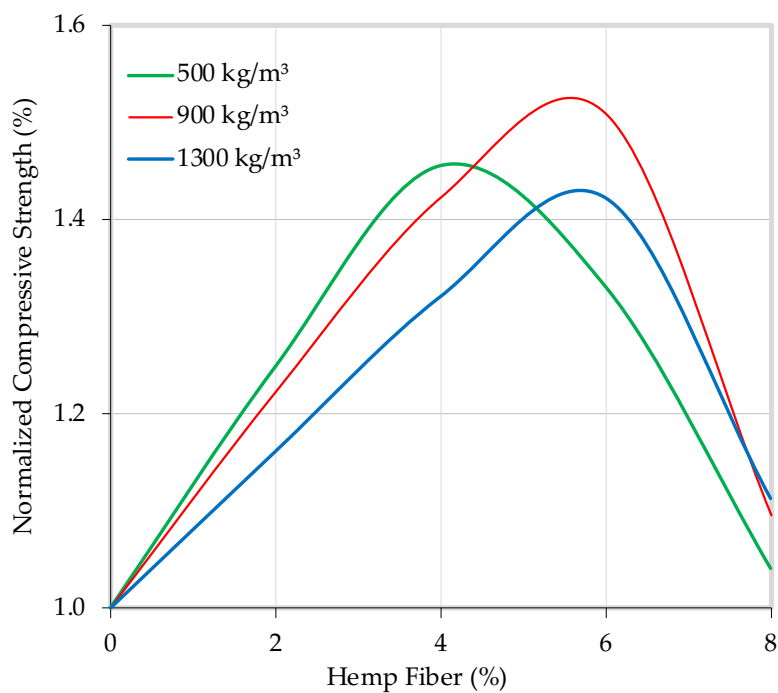
It can be stated that the optimal method for achieving high axial compressive strength is to use HF between 0.4% to 0.6%. The bond between the cement matrix and the fibre is strengthened by the addition of HF to the base mix at this range. The experimental results show that the compressive strength of LFC is directly related to its density, with a decrease in density having an exponentially negative effect on the property [51]. Furthermore, low-density LFC generates reduced strength, whereas high-density FC generates good axial compressive strength, as seen in Fig. 7. Since LFC is porous, its compressive strength is also strongly influenced by its density. The compressive quality was diminished because more foam was used at lower densities than was necessary [52]. This is because more foam agent generally results in the development of air voids.

The presence of pores, air voids, and matrix; all attributes of microstructure; usually has an impact on compressive strength, which is linked to density [53]. Longer testing ages resulted in greater LFC compressive strength, which was another factor that affected the compressive strength. Natural fibre HF can be used as an anti-micro cracking agent and improves the axial compressive quality of LFC. HF has a high failure strain, remarkable compatibility, and a strong particle bonding between the fibres and the matrix. It can also absorb energy [54].





**Fig. 7.** Influence of HF weight fractions on compressive strength of LFC



**Fig. 8.** Influence of HF weight fractions on normalized compressive strength of LFC

As shown in Fig. 9, HF is a multi-filament fibre that improves the bonding between the parts of particles and lowers the void ratio to increase compressive strength. In most circumstances, the microstructure characteristics of air spaces, pores, and matrices influence the density-related compressive quality. Testing also showed that as the samples aged, the compressive quality of the LFC improved. The presence of HF would not cause the samples to break; rather, they would act as an anti-micro crack agent to prevent the cracks from spreading. Since HF has a greater modulus, a greater concentration of fibres calls for a greater force to be applied. It's also worth noting that HF,

according to its biodegradable properties, can be used as a strengthening agent. In most cases, the high failure strain of HF results in a very compatible combination of fibres and matrix. In addition, an increase in blockages causes an increase in hardness as the fibre content grows. The shorter the fibres, the more securely they can anchor the dust [55]. The results showed that HF could soak up force because of the tight bonds it formed between the fibres and the matrix [56].

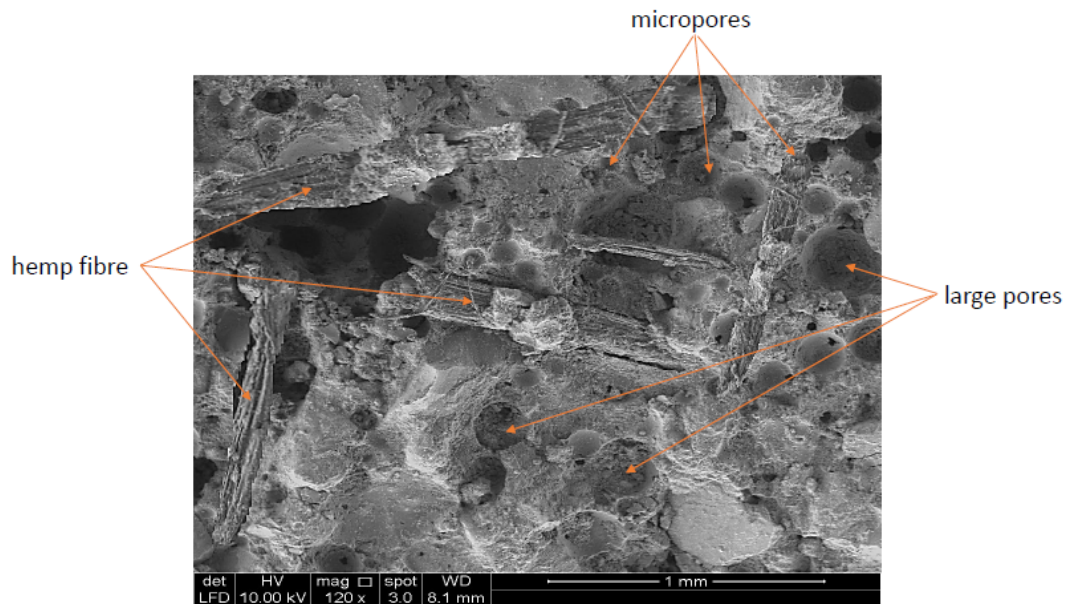


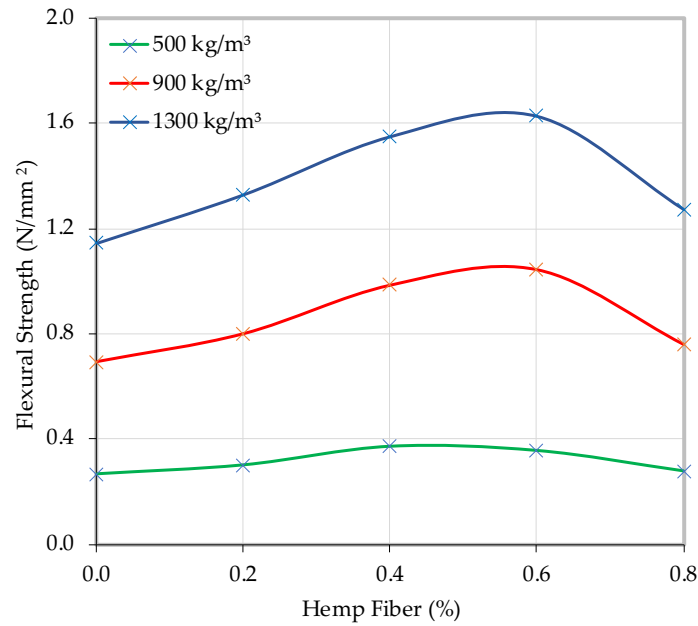
Fig. 9. Morphology of 1300 kg/m<sup>3</sup> LFC reinforced with 0.6% HF

### 3.2 Flexural strength

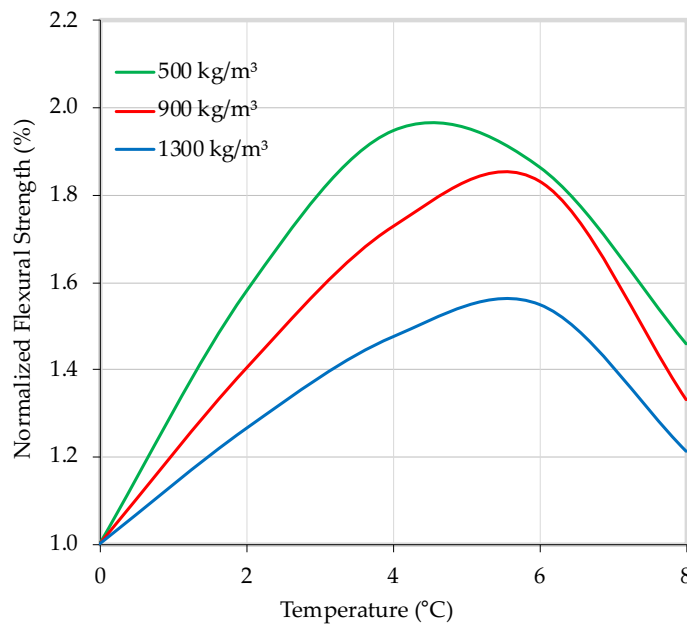
The flexural strength values for LFC densities of 500, 900, and 1300 kg/m<sup>3</sup> with varying weight fractions of HF are shown in Fig. 10 and Fig. 11 shows its normalized flexural strength. LFC with a density of 500 kg/m<sup>3</sup> and 0.4% HF produces flexural strength of 0.37 N/mm<sup>2</sup>, while LFC with a density of 900 kg/m<sup>3</sup> and 1300 kg/m<sup>3</sup> and a HF weight fraction of 0.6% has an optimal flexural strength result, with values of 1.05 N/mm<sup>2</sup> and 1.63 N/mm<sup>2</sup> respectively.

LFC's flexural strength declined dramatically after the HF volume fraction was above a particular threshold; for instance, the strength of 500 kg/m<sup>3</sup> density FC dropped once the HF volume fraction was above 0.4%. In addition, when HF was above 0.6%, the flexural strength of LFC with densities of 900 kg/m<sup>3</sup> and 1300 kg/m<sup>3</sup> dropped. This could be because the surrounding fibres were not completely saturated with matrix, which was a primary contributor to the composite's insufficiency. This tendency of weakening at specific HF volume fractions was therefore also observed in axial compressive strength.

The flexural strength to compressive strength ratio of LFC is higher than that of normal concrete, ranging between 0.20 and 0.40. The current study found that the flexural strength to compressive strength ratio of control LFC (without fibre) was 0.20. As a result, the addition of HF significantly improved the tensile strength to compressive strength ratio of LFC in the range of 0.20 to 0.28. HF's ability to transform the cement matrix from brittle to ductile elastic-plastic is one of its many benefits to the LFC mass reinforcement process [57].



**Fig. 10.** Influence of HF weight fractions on flexural strength of LFC



**Fig. 11.** Influence of HF weight fractions on normalized flexural strength of LFC

### 3.3 Splitting tensile strength

The splitting tensile strength for LFC densities of 500, 900, and 1300 kg/m<sup>3</sup> with various weight fractions of HF is shown in Fig. 12 and Fig. 13 demonstrates its normalized compressive strength. LFC with a density of 500 kg/m<sup>3</sup> and 0.4% HF had a superior splitting tensile strength of 0.24 N/mm<sup>2</sup> when compared to other weight fractions, as shown in Figures 12 and 13. In addition, LFC with densities of 900 kg/m<sup>3</sup> and 1300 kg/m<sup>3</sup> and inclusion of 0.6% HF produces ideal splitting tensile strength when compared to other HF weight fractions, with respective values of 0.71 N/mm<sup>2</sup> and 1.11 N/mm<sup>2</sup>. It is possible to state that the utilisation of HF at concentrations ranging from 0.04% to 0.60% is the method that works best for achieving a high splitting tensile strength. When the weight fraction of

HF exceeded the specified percentages, there was a significant decrease in the splitting tensile strength of the material. This was also true for the axial compressive strength and the flexural strength. In this particular scenario, the splitting tensile strength of FC with a density of  $500 \text{ kg/m}^3$  decreased as the volume fraction of HF got closer to being greater than 0.4%. In addition, the splitting tensile strength of FC with densities of 900 and  $1300 \text{ kg/m}^3$  decreased when the volume fraction of HF was greater than 0.6%. It's possible that the tensile failure in the LFC was caused by the dislocation of molecules and atoms within the material, so this could be explained by that. On the other hand, the fibre that was included acted as a binder, which helped to maintain their cohesiveness [58]. In addition to this, HF makes it easier to bring the load through the shear stress at the interface, which results in an increase in the splitting tensile strength of the LFC. However, in order for these properties to be present, the HF and the matrix need to have strong bonds.

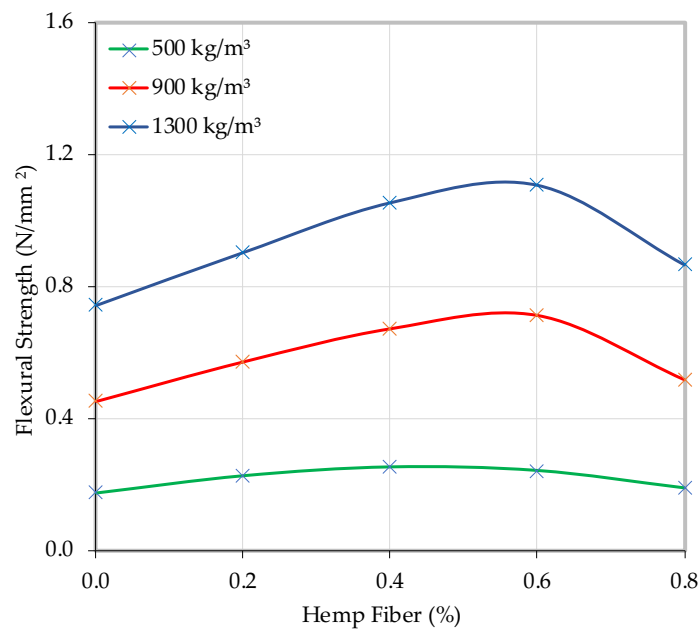


Fig. 12. Influence of HF weight fractions on splitting tensile strength of LFC

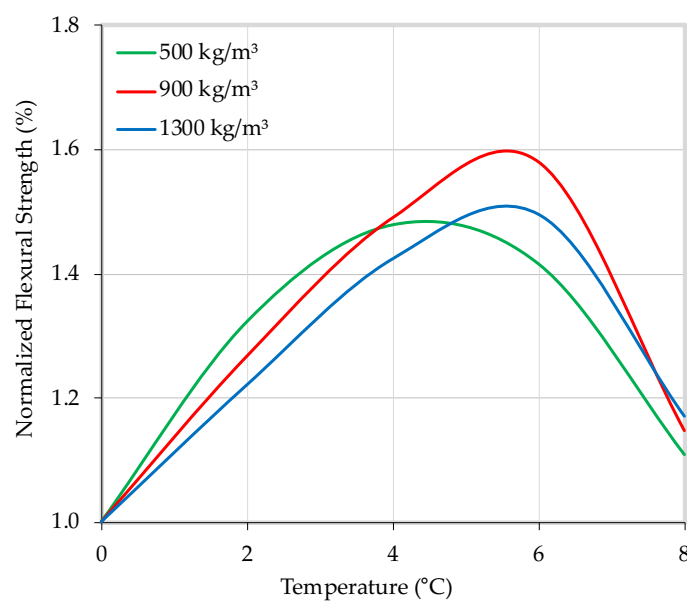


Fig. 13. Influence of HF weight fractions on normalized splitting tensile strength of LFC

### 3.4 Ultrasonic Pulse Velocity

The ultrasonic pulse velocity (UPV) method is one of the most well-known methods used to identify the properties of concrete's strength. Despite not being a precise instrument for evaluating concrete's pore structure, it can still show an initial forecast of the material's condition. More so, UPV is a non-destructive test that measures the time it takes for a pulse to travel a predetermined distance; therefore, it is safe to use on LFC samples. The purpose of the examination is to ascertain numerous factors, such as the homogeneity of the LFC, the presence of a crack, or the occurrence of any other flaw. High velocities indicate high-quality, uniform concrete, while low velocities may reveal concrete with multiple cracks or voids. The results of the ultrasonic pulse velocity (UPV) measurements are shown for all three densities in Fig. 14. The ultrasonic pulse velocity (UPV) is higher in the LFC samples with the HF inclusion in the base mix compared to the control samples. Densities of 900 and 1300 kg/m<sup>3</sup> are more effective than a 500 kg/m<sup>3</sup> density. Ultrasonic pulse velocity (UPV) readings of 2688 m/s for 900kg/m<sup>3</sup> density and 3341 m/s for 1300 kg/m<sup>3</sup> density are significantly increased when 0.5% HF is added. Higher HF rates in the base mix of LFC for fibre may account for this. Also, as HF has a relatively high specific gravity of 0.89, its incorporation into the LFC base mix boosted the cementitious material's ultrasonic pulse velocity value. As a result, it was to be expected that the UPV of the 0% fibre would be lower than that of the 0.2%, 0.4%, 0.6% and 0.8% HF addition into LFC. Ultrasonic pulse velocity testing was greatly affected by the presence of voids and other heterogeneities. In this context, it's important to note that the density of LFC and its pliability influence the speed with which waves can travel. In contrast to fluids and gases, solids allow the pulse wave to go through them much more quickly [59]. On top of that, the pulse wave is extraordinarily nuanced and sensitive to fluctuations in the medium, whether they be downward or upward [60].

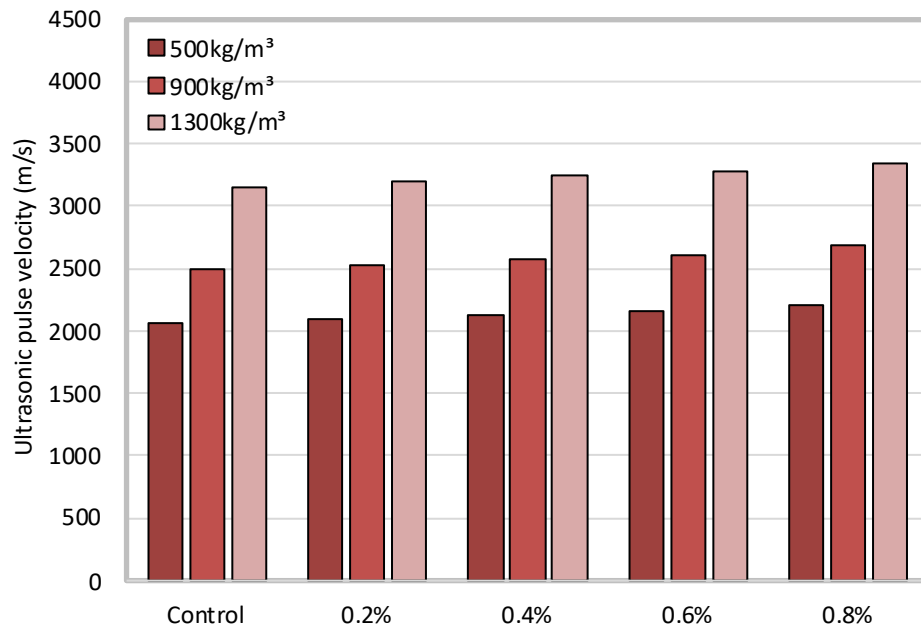


Fig. 14. Influence of HF weight fractions on ultrasonic pulse velocity of LFC

## 4. Conclusions

The purpose of this study was to conduct an experimental investigation into the effects on the mechanical properties of incorporating different weight fractions of hemp fibre (HF) into three different densities of LFC (500 kg/m<sup>3</sup>, 900 kg/m<sup>3</sup>, and 1300 kg/m<sup>3</sup>). The effects of including HF at five

distinct weight fractions, namely 0.0%, 0.2%, 0.4%, 0.6% and 0.8%, were analysed. According to the findings of the experiments, adding HF to LFC enhances the compressive strength, flexural strength, splitting tensile strength and ultrasonic pulse velocity. The mechanical properties of LFC, on the other hand, changed depending on the amount of HF that was added to it. In general, a weight fraction between 0.4% to 0.6% HF in LFC produced the best results. They were bound together by the addition of HF in LFC. The LFC's strength is increased by HF's ability to bring the load through shear stress at the interface. These characteristics must, however, be present for HF and matrix to have a strong bond.

### Acknowledgment

This research was funded by a grant from the Ministry of Higher Education of Malaysia (FRGS Grant with a project code: FRGS/1/2022/TK01/USM/02/3).

### References

- [1] Putra, Nandy, Evi Sofia, and B. Ali Gunawan. "Evaluation of Indirect Evaporative Cooling Performance Integrated with Finned Heat Pipe and Luffa Cylindrica Fiber as Cooling/Wet Media." *Journal of Advanced Research in Experimental Fluid Mechanics and Heat Transfer* 3, no. 1 (2021): 16-25.
- [2] Mydin, MA Othuman, A. F. Phius, N. Md Sani, and Norngainy Mohd Tawil. "Potential of green construction in Malaysia: industrialised building system (IBS) vs traditional construction method." In *E3S Web of Conferences*, vol. 3, p. 01009. EDP Sciences, 2014. <https://doi.org/10.1051/e3sconf/20140301009>
- [3] Asim, Muhammad, Ghulam Moeen Uddin, Hafsa Jamshaid, Ali Raza, Uzair Hussain, Aamir Naseem Satti, Nasir Hayat, and Syed Muhammad Arafat. "Comparative experimental investigation of natural fibers reinforced light weight concrete as thermally efficient building materials." *Journal of Building Engineering* 31 (2020): 101411. <https://doi.org/10.1016/j.jobbe.2020.101411>
- [4] Elshahawi, Mahmoud, Alex Hückler, and Mike Schlaich. "Infra lightweight concrete: A decade of investigation (a review)." *Structural Concrete* 22 (2021): E152-E168. <https://doi.org/10.1002/suco.202000206>
- [5] Amran, YH Mugahed, Nima Farzadnia, and AA Abang Ali. "Properties and applications of foamed concrete; a review." *Construction and Building Materials* 101 (2015): 990-1005. <https://doi.org/10.1016/j.conbuildmat.2015.10.112>
- [6] Asrah, Hidayati, Elffie Yunus, and Ahmad Nurfaidhi Rizalman. "Compressive Strength of Eco-Processed Pozzolan Concrete under Chloride and Sulphate Exposure." *Journal of Advanced Research in Applied Mechanics* 59, no. 1 (2019): 1-9. <https://akademiabaru.com/submit/index.php/aram/article/view/1762>
- [7] Raj, Bhagyasree, Dhanya Sathyan, Mini K. Madhavan, and Amritha Raj. "Mechanical and durability properties of hybrid fiber reinforced foam concrete." *Construction and Building Materials* 245 (2020): 118373. <https://doi.org/10.1016/j.conbuildmat.2020.118373>
- [8] Fu, Yanbin, Xiuling Wang, Lixin Wang, and Yunpeng Li. "Foam concrete: A state-of-the-art and state-of-the-practice review." *Advances in Materials Science and Engineering* 2020 (2020): 1-25. <https://doi.org/10.1155/2020/6153602>
- [9] Ramamurthy, K., EK Kunhanandan Nambiar, and G. Indu Siva Ranjani. "A classification of studies on properties of foam concrete." *Cement and concrete composites* 31, no. 6 (2009): 388-396. <https://doi.org/10.1016/j.cemconcomp.2009.04.006>
- [10] Nensok, Mohammed Hassan, Md Azree Othuman Mydin, and Hanizam Awang. "Investigation of thermal, mechanical and transport properties of ultra-lightweight foamed concrete (ULFC) strengthened with alkali treated banana fibre." *Journal of Advanced Research in Fluid Mechanics and Thermal Sciences* 86, no. 1 (2021): 123-139. <http://dx.doi.org/10.37934/arfmts.86.1.123139>
- [11] Mydin, Md Azree Othuman, Shankar Ganesan, Mohd Yazid Mohd Yunos, Nangkula Utaberta, and Nor Atiah Ismail. "Structural behaviour of coir fibre-reinforced foamed concrete wall panel system." *Jurnal Teknologi* 78, no. 5 (2016).
- [12] Suhaili, Siti Shahirah, Md Azree Othuman Mydin, and Hanizam Awang. "Influence of Mesocarp Fibre Inclusion on Thermal Properties of Foamed Concrete." *Journal of Advanced Research in Fluid Mechanics and Thermal Sciences* 87, no. 1 (2021): 1-11. <https://doi.org/10.37934/arfmts.87.1.111>
- [13] Ganesan, Shankar, Md Azree Othuman Mydin, Norazmawati Md Sani, and Adi Irfan Che Ani. "Performance of polymer modified mortar with different dosage of polymeric modifier." In *MATEC Web of Conferences*, vol. 15, p. 01039. EDP Sciences, 2014. <http://dx.doi.org/10.1051/mateconconf/20141501039>

- [14] Tambichik, Muhammad Afiq, Abdul Aziz Abdul Samad, Noridah Mohamad, Ahmad Zurisman Mohd Ali, Md Azree Othuman Mydin, Mohamad Zulhairi Mohd Bosro, and Muhamad Afif Iman. "Effect of combining Palm Oil Fuel Ash (POFA) and Rice Husk Ash (RHA) as pozzolan to the compressive strength of concrete." *International Journal of Integrated Engineering* 10, no. 8 (2018). <http://dx.doi.org/10.30880/ijie.2018.10.08.004>
- [15] Serri, Eravan, M. Zailan Suleiman, and Md Azree Othuman Mydin. "The effects of oil palm shell aggregate shape on the thermal properties and density of concrete." In *Advanced Materials Research*, vol. 935, pp. 172-175. Trans Tech Publications Ltd, 2014. <https://doi.org/10.4028/www.scientific.net/AMR.935.172>
- [16] Mydin, MA Othuman, N. Mohd Zamzani, and AN Abdul Ghani. "Effect of alkali-activated sodium hydroxide treatment of coconut fiber on mechanical properties of lightweight foamed concrete." In *AIP Conference Proceedings*, vol. 2016, no. 1, p. 020108. AIP Publishing LLC, 2018. <https://doi.org/10.1063/1.5055510>
- [17] Mohamad, Noridah, Abdul Aziz Abdul Samad, Muhammad Tahir Lakhari, Md Azree Othuman Mydin, Suriani Jusoh, A. Sofia, and Suaidi Azis Efendi. "Effects of incorporating banana skin powder (BSP) and palm oil fuel ash (POFA) on mechanical properties of lightweight foamed concrete." *International Journal of Integrated Engineering* 10, no. 9 (2018). <http://dx.doi.org/10.30880/ijie.2018.10.09.013>
- [18] Mydin, MA Othuman, MF Mohamed Shajahan, S. Ganesan, and N. Md Sani. "Laboratory investigation on compressive strength and micro-structural features of foamed concrete with addition of wood ash and silica fume as a cement replacement." In *MATEC Web of Conferences*, vol. 17, p. 01004. EDP Sciences, 2014. <http://dx.doi.org/10.1051/mateconf/20141701004>
- [19] Serri, E., MA Othuman Mydin, and M. Z. Suleiman. "The influence of mix design on mechanical properties of oil palm shell lightweight concrete." *J. Mater. Environ. Sci* 3 (2015): 607-612.
- [20] Mydin, MA Othuman, N. A. Rozlan, N. Md Sani, and S. Ganesan. "Analysis of micro-morphology, thermal conductivity, thermal diffusivity and specific heat capacity of coconut fibre reinforced foamed concrete." In *MATEC Web of Conferences*, vol. 17, p. 01020. EDP Sciences, 2014. <https://doi.org/10.1051/mateconf/20141701020>
- [21] Wahyuni, Ade Sri, Fepy Supriani, and Agustini Gunawan. "The performance of concrete with rice husk ash, sea shell ash and bamboo fibre addition." *Procedia Engineering* 95 (2014): 473-478.
- [22] Kumarasamy, Karthikeyan, G. Shyamala, and Haftom Gebreyowhanse. "Strength properties of bamboo fiber reinforced concrete." In *IOP Conference Series: Materials Science and Engineering*, vol. 981, no. 3, p. 032063. IOP Publishing, 2020. <https://doi.org/10.1088/1757-899X/981/3/032063>
- [23] KALA, KAVITHA Sand TFelix. "Effectiveness of Bamboo Fiber as a Strength Enhancer in Concrete."
- [24] Archila, Hector, Sebastian Kaminski, David Trujillo, Edwin Zea Escamilla, and Kent A. Harries. "Bamboo reinforced concrete: a critical review." *Materials and Structures* 51 (2018): 1-18. <https://doi.org/10.1617/s11527-018-1228-6>
- [25] Hamid, Roszilah, and Annis Nazirah Abdul Aziz. "Mechanical properties and impact resistance of hybrid kenaf and coir fibre reinforced concrete." *Journal of Advanced Research in Applied Mechanics* 47, no. 1 (2018): 1-10. <https://akademiabaru.com/submit/index.php/aram/article/view/1818>
- [26] Mahjoub, Reza, Jamaludin Mohamad Yatim, Abdul Rahman Mohd Sam, and Sayed Hamid Hashemi. "Tensile properties of kenaf fiber due to various conditions of chemical fiber surface modifications." *Construction and Building Materials* 55 (2014): 103-113. <https://doi.org/10.1016/j.conbuildmat.2014.01.036>
- [27] Mahzabin, Mst Sadia, Lim Jee Hock, Md Shabbir Hossain, and Lim Siong Kang. "The influence of addition of treated kenaf fibre in the production and properties of fibre reinforced foamed composite." *Construction and Building Materials* 178 (2018): 518-528. <https://doi.org/10.1016/j.conbuildmat.2018.05.169>
- [28] Elsaid, A., M. Dawood, R. Seracino, and C. Bobko. "Mechanical properties of kenaf fiber reinforced concrete." *Construction and Building Materials* 25, no. 4 (2011): 1991-2001. <https://doi.org/10.1016/j.conbuildmat.2010.11.052>
- [29] Kim, Du-Yeong, Joon-Pyo Jeun, Hyun-Bin Kim, and Phil-Hyun Kang. "Mechanical properties of kenaf fiber-cement composites containing kenaf gamma-ray grafted with acrylamide." *Journal of wood science* 60, no. 4 (2014): 263-268.
- [30] Mohsin, SM Syed, A. O. Baarimah, and G. A. Jokhio. "Effect of kenaf fiber in reinforced concrete slab." In *IOP Conference Series: Materials Science and Engineering*, vol. 342, no. 1, p. 012104. IOP Publishing, 2018. <https://doi.org/10.1088/1757-899X/342/1/012104>
- [31] Guo, Aofei, Zhihui Sun, and Jagannadh Satyavolu. "Impact of modified kenaf fibers on shrinkage and cracking of cement pastes." *Construction and Building Materials* 264 (2020): 120230. <https://doi.org/10.1016/j.conbuildmat.2020.120230>
- [32] Sedan, David, Cécile Pagnoux, Agnès Smith, and Thierry Chotard. "Mechanical properties of hemp fibre reinforced cement: Influence of the fibre/matrix interaction." *Journal of the European Ceramic Society* 28, no. 1 (2008): 183-192. <https://doi.org/10.1016/j.jeurceramsoc.2007.05.019>

- [33] Poletanovic, Bojan, Jelena Dragas, Ivan Ignjatovic, Miroslav Komljenovic, and Ildiko Merta. "Physical and mechanical properties of hemp fibre reinforced alkali-activated fly ash and fly ash/slag mortars." *Construction and Building Materials* 259 (2020): 119677. <https://doi.org/10.1016/j.conbuildmat.2020.119677>
- [34] Awwad, Elie, Mounir Mabsout, Bilal Hamad, Mohamad Talal Farran, and Helmi Khatib. "Studies on fiber-reinforced concrete using industrial hemp fibers." *Construction and Building Materials* 35 (2012): 710-717. <https://doi.org/10.1016/j.conbuildmat.2012.04.119>
- [35] Kaplan, Gökhan, and O. Yavuz Bayraktar. "The effect of hemp fiber usage on the mechanical and physical properties of cement based mortars." *Res. Eng. Struct. Mater* 7 (2021): 245-258. <http://dx.doi.org/10.17515/resm2020.242ma1222>
- [36] Li, Zhijian, Lijing Wang, and Xungai Wang. "Compressive and flexural properties of hemp fiber reinforced concrete." *Fibers and polymers* 5, no. 3 (2004): 187-197. <http://dx.doi.org/10.1007/BF02902998>
- [37] Ghosn, Samer, Nour Cherkawi, and Bilal Hamad. "Studies on hemp and recycled aggregate concrete." *International Journal of Concrete Structures and Materials* 14 (2020): 1-17. <http://dx.doi.org/10.1186/s40069-020-00429-6>
- [38] Walker, R., Sara Pavia, and R. Mitchell. "Mechanical properties and durability of hemp-lime concretes." *Construction and Building Materials* 61 (2014): 340-348. <https://doi.org/10.1016/j.conbuildmat.2014.02.065>
- [39] Grubeša, Ivanka Netinger, Berislav Marković, Anita Gojević, and Jelena Brdarić. "Effect of hemp fibers on fire resistance of concrete." *Construction and Building Materials* 184 (2018): 473-484. <https://doi.org/10.1016/j.conbuildmat.2018.07.014>
- [40] Ziane, Sami, Mohammed-Rissel Khelifa, and Samy Mezhoud. "A study of the durability of concrete reinforced with hemp fibers exposed to external Sulfatic attack." *Civil and Environmental Engineering Reports* 30, no. 2 (2020): 158-184. <https://doi.org/10.2478/ceer-2020-0025>
- [41] British Standard Institution. "BS EN 12620 Aggregates for concrete." British Standard Institution, London. (2013): 1-6.
- [42] British Standard Institution. "BS EN 197-1 Cement Composition, specifications and conformity criteria for common cements." British Standard Institution, London. (2011): 1-12.
- [43] Manaia, João P., Ana T. Manaia, and Lúcia Rodrigues. "Industrial hemp fibers: An overview." *Fibers* 7, no. 12 (2019): 106.
- [44] Israr, H. A., C. T. M. Yap, K. J. Wong, and M. Y. Yahya. "Compressive properties of Hawaiian Gold Timber Bamboo under different conditions." *Journal of Advanced Research in Applied Mechanics* 25, no. 1 (2016): 10-18. <https://akademiabaru.com/submit/index.php/aram/article/view/1762>
- [45] Zheng, Guan-Yu. "Numerical investigation of characteristic of anisotropic thermal conductivity of natural fiber bundle with numbered lumens." *Mathematical Problems in Engineering* 2014 (2014). <http://dx.doi.org/10.1155/2014/506818>
- [46] Chegiani, Faissal, Satish TS Bukkapatnam, and Mohamed El Mansori. "Thermo-mechanical effects in mechanical polishing of natural fiber composites." *Procedia Manufacturing* 26 (2018): 294-304. <https://doi.org/10.1016/j.promfg.2018.07.038>
- [47] British Standard Institution. "BS EN 12390-3 Testing Hardened Concrete: Compressive Strength of Test Specimens." British Standard Institution, London. (2019): 1-15.
- [48] British Standard Institution. "BS EN 12390-6 Testing Hardened Concrete — Part 6: Tensile Splitting Strength of Test Specimens." British Standard Institution, London. (2010): 1-15.
- [49] British Standard Institution. "BS EN 12390-Part 5. 2019. Testing Hardened Concrete Part 5: Flexural Strength of Test Specimens." British Standard Institution.
- [50] ASTM, C. "597 (2002) Standard test method for pulse velocity through concrete." *American Society for Testing and Materials, Philadelphia, PA*.
- [51] Karl, S., and J-D. Wörner. "Foamed concrete—mixing and workability." In *Special Concretes-Workability and Mixing*, pp. 220-226. CRC Press, 1993.
- [52] Falliano, Devid, Dario De Domenico, Giuseppe Ricciardi, and Ernesto Gugliandolo. "Experimental investigation on the compressive strength of foamed concrete: Effect of curing conditions, cement type, foaming agent and dry density." *Construction and Building Materials* 165 (2018): 735-749. <https://doi.org/10.1016/j.conbuildmat.2017.12.241>
- [53] Mydin, Md Azree Othuman, Mohd Mustafa Al Bakri Abdullah, Mohd Nasrun Mohd Nawi, Zarina Yahya, Liyana Ahmad Sofri, Madalina Simona Baltatu, Andrei Victor Sandu, and Petrica Vizureanu. "Influence of Polyformaldehyde Monofilament Fiber on the Engineering Properties of Foamed Concrete." *Materials* 15, no. 24 (2022): 8984. <http://dx.doi.org/10.3390/ma15248984>



- [54] Pirah, Jeffery Anak, Md Azree Othuman Mydin, Mohd Nasrun Mohd Naw, and Roshartini Omar. "Preliminary studies on the development of sustainable lightweight foamed concrete reinforced with natural fibres for mechanical properties enhancement." *Journal of Advanced Research in Applied Sciences and Engineering Technology* 29, no. 1 (2022): 90-100. <http://dx.doi.org/10.37934/araset.29.1.90100>
- [55] Mydin, Md Azree Othuman, Mohd Nasrun Mohd Naw, Roshartini Omar, Mohamed Amine Khadimallah, Irwan Mohammad Ali, and Rafikullah Deraman. "The use of inorganic ferrous–ferric oxide nanoparticles membrane to improve fresh and durability properties of foamed concrete." *Chemosphere* (2023): 137661. <https://doi.org/10.1016/j.chemosphere.2022.137661>
- [56] Mydin, MA Othuman, N. Mohd Zamzani, and AN Abdul Ghani. "Experimental data on compressive and flexural strengths of coir fibre reinforced foamed concrete at elevated temperatures." *Data in brief* 25 (2019): 104320. <http://dx.doi.org/10.1016/j.dib.2019.104320>
- [57] Mydin, MA Othuman, N. Mohamad, AA Abdul Samad, I. Johari, and MA Che Munaaim. "Durability performance of foamed concrete strengthened with chemical treated (NaOH) coconut fiber." In *AIP Conference Proceedings*, vol. 2016, no. 1, p. 020109. AIP Publishing LLC, 2018. <http://dx.doi.org/10.1063/1.5055511>
- [58] Awang, Hanizam, Md Azree Othuman Mydin, and Ahmad Farhan Roslan. "Effects of fibre on drying shrinkage, compressive and flexural strength of lightweight foamed concrete." In *Advanced Materials Research*, vol. 587, pp. 144-149. Trans Tech Publications Ltd, 2012. <https://doi.org/10.4028/www.scientific.net/AMR.587.144>
- [59] Othuman Mydin, M. A., and N. Mohd Zamzani. "Coconut fiber strengthen high performance concrete: Young's modulus, ultrasonic pulse velocity and ductility properties." *International Journal of Engineering and Technology (UAE)* 7, no. 2 (2018): 284-287. <http://dx.doi.org/10.14419/ijet.v7i2.23.11933>
- [60] Nensok, Mohammed Hassan, Md Azree Othuman Mydin, and Hanizam Awang. "Fresh state and mechanical properties of ultra-lightweight foamed concrete incorporating alkali treated banana fibre." *Jurnal Teknologi* 84, no. 1 (2022): 117-128.