



Covenant University

Raising a new Generation of Leaders

# ADVANCING THE COMMUNITY DEVELOPMENT INITIATIVES OF COVENANT UNIVERSITY FOR GREATER IMPACT

**DR. ABIODUN HUMPHREY ADEBAYO**

*Chair, Covenant University Community Development Impact Initiative Committee*

*Associate Professor of Biochemistry, Department of Biological Sciences*

*Covenant University*

**PRESENTATION @ COVENANT UNIVERSITY EXECUTIVE ADVANCE FOR  
2016/2017 ACADEMIC SESSION**

# OUTLINE OF PRESENTATION

---

- Preamble
- Introduction
- World Class Universities Committed to CD
- Current State of CUCDIIC
- Selected Papers from CUCDIIC Programmes
- How Do We Advance CDII for Greater Impact?
- Conclusion

# PREAMBLE

- “What we have done for ourselves alone dies with us; what we have done for others and the world remains and is immortal” ~**Albert Pike**
- “The best way to find yourself is to lose yourself in the service of others.” -**Mahatma Gandhi**
- How many of us have engaged in one community related activities before aside NYSC?



# INTRODUCTION

## □ What is a Community?

- Community is a group of people with a shared identity.
- Self-organized network of people with common agenda, cause, or interest, who collaborate by sharing ideas, information, and other resources.



# INTRODUCTION Cont'd

- “**Development**” is a process that increases choices.
- It means **new options, diversification**, thinking about apparent issues differently and anticipating change (Christenson et.al., 1989).
- Development involves **change, improvement and vitality** – a directed attempt to improve participation, flexibility, equity, attitudes, the function of institutions and the quality of life.



# INTRODUCTION

- The United Nations defines *community development* broadly as "a process where community members come together to take collective action and generate solutions to common problems."



- 
- **Community development improves the ability of communities to collectively make better decisions about the use of resources such as infrastructure, labour and knowledge.**
  - **Hence, community development relies on interaction between people and joint action, rather than individual activity – what some sociologists call “collective agency” (Flora and Flora, 1993).**

- Community development is a process where people are united with those of governmental authorities to improve the economic, social and cultural conditions of communities and communities are integrated into the life of the nation enabling them to contribute fully to national progress- (UN, from Biggs, 1999).





- **Community capacity is the combined influence of a community's commitment, resources and skills that can be deployed to build on community strengths and address community problems and opportunities – (Aspen Institute, 2000).**



# World Class Universities Committed to Community Services

## ❖ Eastern Connecticut State University

- Required 4 hours of community service per semester before students could score a dorm.
- Organize regular events such as the Poverty Marathon and Day of Giving.



# ❖ **Stanford University**

- Devotes more of its funding to community service and outreach with 22.3% of its work study funds going towards such programs.
- Some of the latest undertakings involve autism awareness, bringing dance to prisoners and greening up South African schools.



# World Class Universities Committed to Community Services

---

## ❖ The California State University, Long Beach

- boasts a Center for Community Engagement brimming with opportunity.
- One of its most notable contributions to the world is the (STEM) 2 initiative, which mentors math, science and engineering students and challenges them apply their studies to the common good — both in California and beyond its borders.

# World Class Universities Committed to Community Services

---

## ❖ Loyola University Chicago

- The Loyola4Chicago initiative sees each participating student donate at least 4 hours a week to various local causes, focusing on tending to some of society's most marginalized communities.
- Among its vast offerings also sits weekly trips to The St. Thomas of Canterbury Soup Kitchen, where first-years gather along with the Loyola companions to feed the homeless.

# World Class Universities Committed to Community Services

## ❖ Harvard Community Services Center

- The mission is to improve the quality of life and social functioning of residents in the Lee-Harvard, Miles, and Seville areas.
- Provide a place where the community can engage in positive leisure, cultural and educational experiences that continue to uplift community and neighbors.



Members of the Harvard Management Company volunteer at the Cambridge Community Center by helping to clean and paint the interior

# **Current State of Community Development Initiatives at Covenant University**

---

- **CU-CDIIC** was first inaugurated in 2006 to take care of the pioneer students.
- It was aimed at inculcating the spirit of leadership and responsibility-citizenship skills in the students through the platform of community service.



- 
- **The First Phase of the programme kicked off on Saturday, June 3, 2006, with the graduating students embarking on environmental sanitation within the streets of its host communities- Ota, Sango and their surroundings.**



- 
- **The current 20-member committee was reconstituted and inaugurated on October 17, 2015 with the following objectives among others:**
    - **Develop strategic plans for aligning the CU Community Development Initiatives along the path of its Corporate Social Responsibility demands.**

- 
- **Identify viable community enhancement projects on short-term, medium-term and long term bases;**
  - **To map out strategies on how to execute these projects; and**
  - **To create credible partnerships for actualizing the Community Impact Initiatives.**

- 
- Channel students' interest in community development activities properly.
  - Evolve strategies for integrating CD into the overall scheme of the CU operations.
  - Have a measurable approach to what the students would be engaged in and make arrangement for their mobilization.

# Operational Strategies

❖ The Committee has the following sub-committees to ensure proper execution of its mandate:

- Education
- Health
- Environmental Activities
- Rural Infrastructures
- Students' Activities

# Educational Activities

---

- **CU-CDIIC :**
  - Organized workshops- for teachers and students
  - Donation of instructional materials to schools including tertiary school,
  - Tutorials and Teaching subjects in secondary schools, Math Clinic, etc
    - The Anglican Grammar School, Ota story

# Educational Activities



**Community Development Impact Initiative Committee Members alongside with TASUED Officials in a group photograph with the donated computers and Library resources after the programme**

# Educational Activities



**Covenant University Donates Computer Sets to  
Community Primary School, Ibogun/Olaoparun Ibogun/Olaoparun**

# Educational Activities

**COVENANT UNIVERSITY**  
COMMUNITY DEVELOPMENT  
IMPACT INITIATIVE COMMITTEE

**IN CONJUNCTION WITH**

**CENTRE FOR LEARNING RESOURCES  
AND COVENANT UNIVERSITY  
STUDENT COUNCIL**

*Present*

**INTER-SECONDARY SCHOOLS  
QUIZ AND DEBATE  
COMPETITIONS**

**CAREER TALK**  
to be delivered by  
**DR. OLUMUYIWA  
OLUDAYO,**  
Director,  
ALDC

**DATE: FRIDAY, MARCH 4, 2016**

**VENUE: ALDC**  
*Africa Leadership Development Centre,  
Covenant University, Canaan Land, Ota*

**TIME: 9:00am -12:00pm**

**HOST:**  
**PROFESSOR CHARLES K. AYO**  
*Vice-Chancellor, Covenant University*

Contact Person:  
Dr. Abiodun H. Adebayo,  
Chair, CU-CDIIC  
08036357197



**Final participants in the quiz competition from Iganmode Grammar School, Faith Academy Secondary School and Scholars Academy, Ota, during the quiz contest**





**Winners of the quiz competition, Scholars Universal Academy, with competition officials**



**Iganmode Grammar School, Ota, receiving the prize for 1st runner-up in the Quiz Competition from Director, CLF Dr. Chris Nkiko.**



**Faith Academy Secondary School, receiving the prize for 2nd runner-up in the Quiz Competition from Director, ALDC, Dr. Olumuyiwa Oludayo**

# Educational Activities

---



**Dr. Michael C. Agarana at a “Math Clinic” organized for students of Covenant University Secondary School and Faith Academy Canaanland**



**CDIIC marks World Women's Day with Breast/Cervical Cancer Awareness Seminar and Testing in 2013**

# Health Outreach



# Health Outreach



# Rural Infrastructural Provisions



# Rural Infrastructural Provisions



**500 KVA Transformer donated to Onigbongbo Community**



# Stevens Children Home Abeokuta

---



**Rev Isaac Wusu receiving microscope and other items from Prof. Taiwo Abioye**



**Most children in this home were Boko Haram victims who have either lost one parent or both**

# Stevens Children Home Abeokuta

---



Handing over some cash raised amongst members to Rev. Wusu

# Environmental Sanitation



**Covenant University students working together to ensure a better Ota Community**

# Student Outreach

---

## ❖ Project One Million Souls

- This is an outreach arm of our students where they visit and donate relief materials to some orphanage homes, hospitals, schools, etc
- Birrel Boys' Remand Home, Yaba.
- Old Peoples' Home, Yaba.

- Modupe Cole, Yaba, Lagos State
- Children's Correctional Centre, Idi Araba.
- Special Correctional Centre for Girls, Idi Araba.
- Girls' Remand Home, Idi Araba.
- Ijamido Orphanage Home, Ota.
- Society for the Blind, Oshodi.
- Boys' Remand Home, Oregun.
- Little Angels Orphanage, Isheri-Olofin.



# Student Outreach

---



# Student Outreach



# **Selected Research Publications From Community Services Organized by CU-CDIIC**





# **Research Paper**

J. Med. Sci., 13 (8): 809-813

15th November, 2013

DOI: 10.3923/jms.2013.809.813

## **Propensity for Diabetes and Correlation of its Predisposing Factors in Ota, Nigeria**

<sup>1,5</sup>E.E.J. Iweala, <sup>1,5</sup>S.N. Chinedu, <sup>1,5</sup>I.S. Afolabi, <sup>1,5</sup>O.O. Ogunlana,  
<sup>2,5</sup>D.E. Azuh, <sup>3,5</sup>V.C. Osamor and <sup>4,5</sup>T.A. Toogun

## Article

# Correlation between body mass index and waist circumference in Nigerian adults: implication as indicators of health status

Shalom Nwodo Chinedu,<sup>1,2</sup> Olubanke O. Ogunlana,<sup>1,2</sup> Dominic E. Azuh,<sup>2,3</sup>  
Emeka E.J. Iweala,<sup>1,2</sup> Israel S. Afolabi,<sup>1,2</sup> Chidi C. Uhuegbu,<sup>2,4</sup> Mercy E. Idachaba,<sup>2,5</sup>  
Victor C. Osamor<sup>2,6</sup>

*<sup>1</sup>Department of Biological Sciences, <sup>2</sup>Public Health and Well Being Research Group, <sup>3</sup>Department of Economics and Development Studies, <sup>4</sup>Department of Physics, <sup>5</sup>Covenant University Health Center, <sup>6</sup>Department of Computer and Information Sciences, Covenant University, Ota, Ogun State, Nigeria*

# **Body Mass Index and Blood Pressure in a Semi-urban Community in Ota, Nigeria**

**Israel Sunmola Afolabi<sup>1,2,\*</sup>, Shalom Nwodo Chinedu<sup>1,2</sup>, Emeka E. J. Iweala<sup>1,2</sup>,  
Olubanke O. Ogunlana<sup>1,2</sup>, Dominic E. Azuh<sup>2,3</sup>**

<sup>1</sup>Biological Sciences Department, Covenant University, Canaan land, Ota, Nigeria

<sup>2</sup>Covenant University Public Health and Well Being Research Group (CUPWERG)

<sup>3</sup>Economics and Development Studies Department, Covenant University, Canaan land, Ota, Nigeria

---

# **How Do We Advance Community Development for Greater Impact?**



# **Transforming CU-CDIIC into a Foundation**

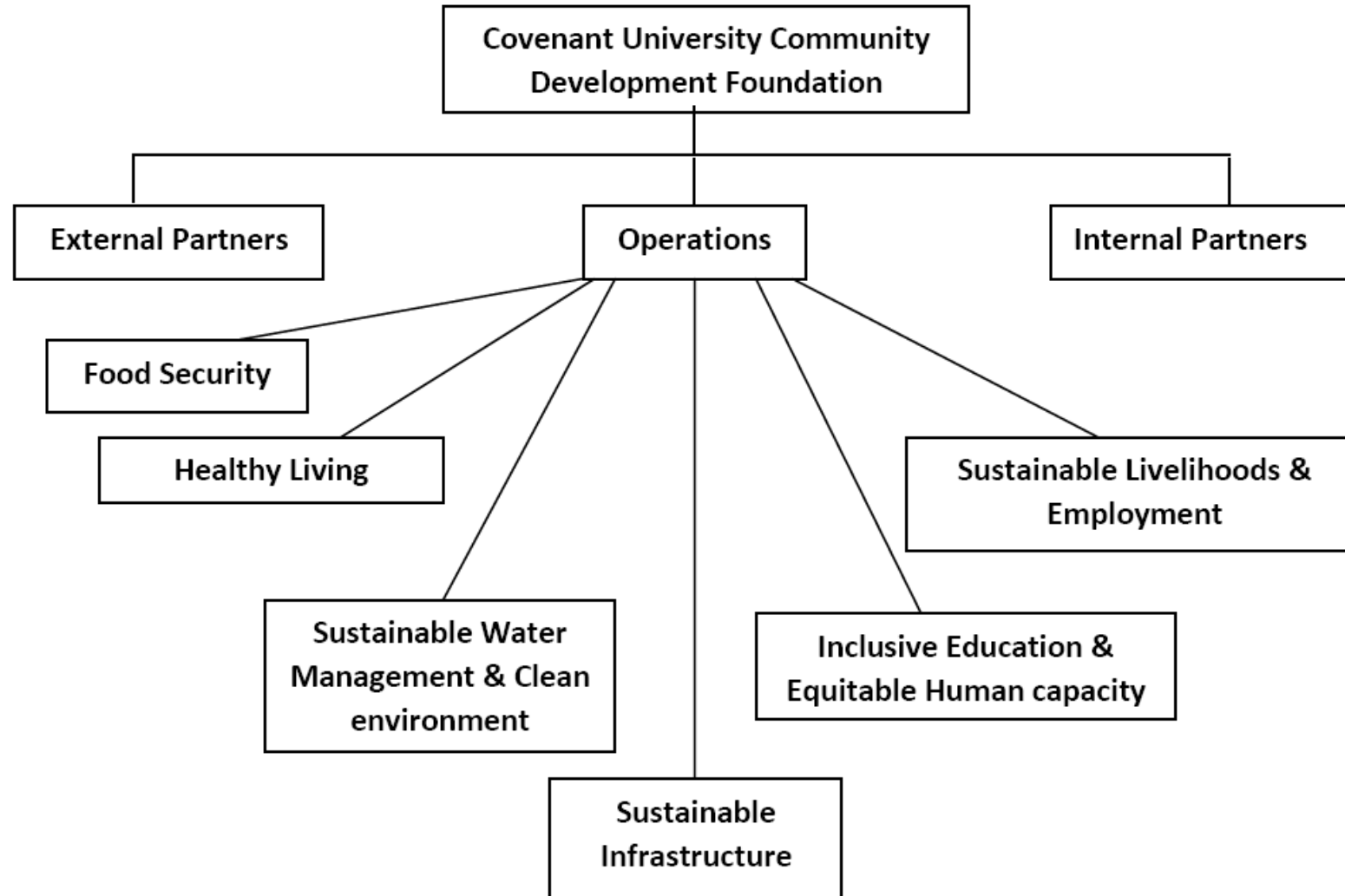
---

- **A proposal for the transformation of CU-CDIIC into registered CU-Community Development Foundation was submitted to the last management which is before the Board.**

# Highlights of the Proposed CU-CDF

- CU-CDF be registered with the CAC and runs a full office complement with full time staff.
- ❖ Administration and Operation
  - Director
  - Deputy Director
  - Project Coordinator
  - Administrative Staff
- ❖ A seven man Board members be appointed to provide oversight functions and also perform advisory roles.
- ❖ Directed at strategic interventions in the affairs of targeted community, which would be in tandem to key aspects of the Sustainable Development Goals (SDGs).

# Operational Guideline of CUCDF



# Expected Outcome

- ❖ Measurable impact in targeted community
- ❖ Work towards winning grants that will improve the standard of living of the host communities.
- ❖ Serve as a resource pool for evolving research topics for the academia and ensuring the outcomes of such research endeavours are put into practical use.
- ❖ Use its understanding of the rural communities for testing and merchandising of research works from the University's laboratories.





# Expected Outcome

---

- ❖ Create an avenue for Covenant University to signpost itself on the global stage as contributing positively in impacting the nation Nigeria, the African continent and the world at large.
- ❖ Help students imbibe the spirit of volunteerism by engaging in selfless services.

# Conclusion

---

- There is no doubt that we need an environmentally friendly community through selfless service for us to attain Vision 10-2022.
- The subject of Community Development is about others and not self.
- Service to others is the rent you pay for your room here on earth. ~**Mohammed Ali**

---

**Thank You All For  
Listening**

